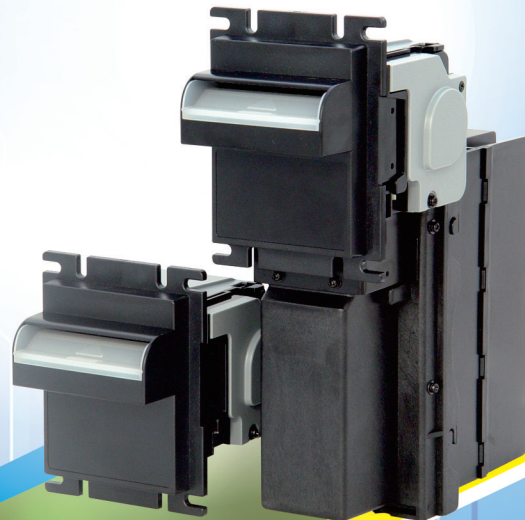


L Series

Bill Acceptor

- Multinational currencies acceptable.
- New generation design of verification system.
- Anti-string technology.
- Selective interfaces.
- Multicolor illumination bezel design.
- Innovative bezel design.

(L70T/L77T)



ICT

L Series

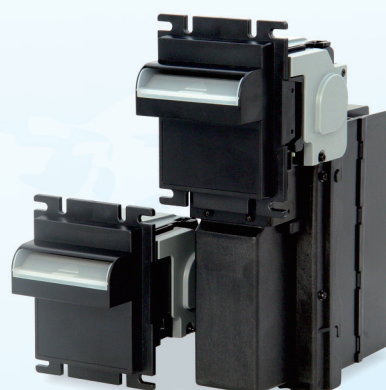
Bill Acceptor

The L Series bill acceptor combines improved bill-sensing technology with lightweight and durable plastic construction. It also features fast software updating, and easy maintenance to increase acceptance rates and reduce bill jammed.



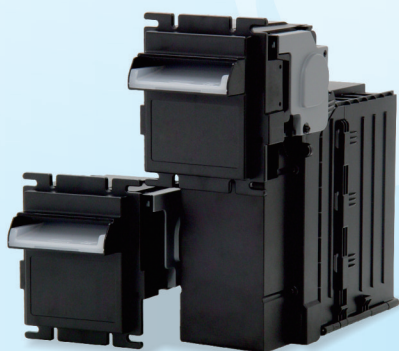
L70

L70-P5



L77F

L77F-P5



L83

L83-P6



Without
metal bracket
L70T-P5/ L77T-P5

With
metal bracket
L70T-P5/ L77T-P5

L Series

Specifications



Acceptance Rate

96% or greater



Bill Insertion

Four-way



Bill Width Accepted

L70-P2/P5, L70#-P2/P5, L70F-P2/P5:

59~67mm/ 2.32~2.64 inches(67mm)

59~71mm/ 2.32~2.8 inches(71mm)

L70T-P5:

65~70mm/ 2.56~2.75 inches

L77F-P2/P5, L77T-P5:

72~77mm/ 2.83~3.03 inches

L83-P3/P6, L83#-P3/P6:

61~83mm/ 2.40~3.27 inches

61~79mm/ 2.40~3.11 inches(Y Type Bezel)



Acceptance Speed

Approx. 3 seconds to cash box



Capacity

L70-P2, L70#-P2, L70F-P2: Approx. 200 notes

L70-P5, L70#-P5, L70F-P5: Approx. 500 notes

L77F-P2: Approx. 150 notes

L77F-P5: Approx. 500 notes

L83-P3, L83#-P3: Approx. 300 notes

L83-P6, L83#-P6: Approx. 600 notes

L70T-P5, L77T-P5: Approx. 500 notes



Interface

L70-P2/P5, L70#-P2/P5:

Pulse, RS232, RS232 A0, ccNet (compatible), MDB, ccTalk

L70(IGT)-P2/P5:

Pulse, RS232, RS232 A0, IGT

L70F-P2/P5, L77F-P2/P5:

Pulse, RS232, RS232 A0, ccNet (compatible), MDB, ccTalk, Pulse(Out of service)

L83-P3/P6:

Pulse, RS232, RS232 A0, ccNet (compatible), MDB, ccTalk, GBA, Parallel, Parallel A4, Pulse(Out of service)

L83#-P3/P6:

Pulse, RS232, RS232 A0, ccNet (compatible), MDB, ccTalk, GBA, Pulse(Out of service)

L70T-P5, L77T-P5:

Pulse, RS232, RS232 A0, ccNet (compatible), MDB, ccTalk, V2.2, Pulse(Out of service)



Power Source

L70#/ L70F/ L77F/ L83#/ L70T/ L77T:

12V DC(10~16V DC)

Others: 12V DC(10.8~13.2V DC)



Power Consumption

Standby: 0.3A, 3.6W

Operation: 1.2A, 14.4W

Maximum: 2A, 24W



Dimension

L70, L70#, L70F: < N Type Bezel >

(W)102.8x(H)134.0x(D)132.1 mm/ 4.05x5.28x5.20 inches

L70-P2, L70#-P2, L70F-P2: < N Type Bezel >

(W)102.8x(H)285.7x(D)188 mm/ 4.05x11.25x7.40 inches

L70-P5, L70#-P5, L70F-P5: < N Type Bezel >

(W)102.8x(H)285.7x(D)216.8 mm/ 4.05x11.25x8.54 inches

L70: < O Type Bezel >

(W)102.8x(H)133.0x(D)118.7 mm/ 4.05x5.24x4.67 inches

L70-P2: < O Type Bezel >

(W)102.8x(H)263.2x(D)174.1 mm/ 4.05x10.36x6.85 inches

L70-P5: < O Type Bezel >

(W)102.8x(H)263.2x(D)203 mm/ 4.05x10.36x7.99 inches

L77F: < I Bezel >

(W)102.4x(H)134x(D)131 mm/ 4.03x5.28x5.16 inches

L77F-P2: < I Bezel >

(W)102.4x(H)272.6x(D)172.8 mm/ 4.03x10.73x6.80 inches

L77F-P5: < I Bezel >

(W)102.4x(H)272.6x(D)221.2 mm/ 4.03x10.73x8.71 inches

L83, L83#: < E Type Bezel >

(W)117.4x(H)133.2x(D)138.5 mm/ 4.62x5.24x5.45 inches

L83P3, L83#-P3: < E Type Bezel >

(W)117.4x(H)260.5x(D)222.2 mm/ 4.79x10.26x8.75 inches

L83P6, L83#-P6: < E Type Bezel >

(W)117.4x(H)260.5x(D)269.2 mm/ 4.79x10.26x10.6 inches

L83P3, L83#-P3: < F Type Bezel >

(W)118.0x(H)251.1x(D)221.7 mm/ 4.65x9.89x8.73 inches

L83P6, L83#-P6: < F Type Bezel >

(W)118.0x(H)251.1x(D)269.2 mm/ 4.65x9.89x10.6 inches

L83: < Y Type Bezel >

(W)117.4x(H)133.2x(D)133.1 mm/ 4.62x5.24x5.24 inches

L83P3, L83#-P3: < Y Type Bezel >

(W)117.4x(H)265x(D)222.2 mm/ 4.62x10.43x8.75 inches

L83P6, L83#-P6: < Y Type Bezel >

(W)117.4x(H)265x(D)269.2 mm/ 4.62x10.43x10.6 inches

L70T-P5, L77T-P5:

Without metal bracket:

(W)106.8x(H)252.6x(D)230.6 mm/ 4.20x9.94x9.08 inches

With metal bracket:

(W)136.4x(H)357x(D)234.1 mm/ 5.37x14.1x9.22 inches



Weight

L70, L70#, L70F: Approx.0.52kg/ 1.15 lbs

L70-P2, L70#-P2, L70F-P2: Approx.1.25kg/ 2.76 lbs

L70-P5, L70#-P5, L70F-P5: Approx.1.4 kg/ 3.09 lbs

L77F: Approx.0.44kg/ 0.97 lbs

L77F-P2: Approx.1.35kg/ 2.98 lbs

L77F-P5: Approx.1.42kg/ 3.13 lbs

L83, L83#: Approx.0.8kg/ 1.76 lbs

L83-P3, L83#-P3: Approx.1.46kg/ 3.22 lbs

L83-P6, L83#-P6: Approx.1.65kg/ 3.64 lbs

L70T-P5, L77T-P5: Approx.1.42kg (Without metal bracket)

Approx.7kg (With metal bracket)



Environmental

Operation Temperature:

L70/ L83: 0°C/ 32°F~55°C/ 131°F

L70F/ L77F/ L70T/ L77T: 0°C/ 32°F~60°C/ 140°F

L70#/ L83#: 0°C/ 32°F ~65°C/ 149°F

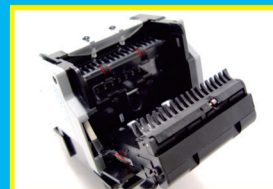
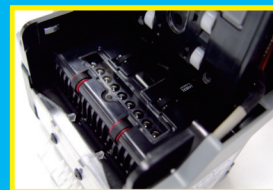
Storage Temperature: -20°C/ -4°F~70°C/ 158°F

Humidity: 30%~85% RH (no condensation)



Recommended Applications

Amusement, Gaming, Vending





International Currency Technologies

No.28, Ln. 15, Sec. 6, Minquan E. Rd., Neihu Dist., Taipei City 114, Taiwan

Phone: +886-2-2793-1236

Fax: +886-2-2793-6125

EMail: sales@ictgroup.com.tw (Product Information)

fae@ictgroup.com.tw (Technical Service)

Website: www.ictgroup.com.tw
